

# Preciso 3D Parcelweigh

## Static Cubing Systems

Static dimensioning/cubing system for parcel shipping and warehouse management a cost-effective solution to your needs and plays an integral part of your daily inbound processes



### **Top performance, user-friendly interface static cubing & dimensioning system**

Static master data collection for warehouse management and inventory of product stock.

**Parcelweigh** mobile (optional) is a mobile unit suitable for warehouse inventory. Easily move and collect master data (weight, dimensions etc.) from your products to your WMS or ERP system.

**The Parcelweigh** are done measuring in 1 – 2 seconds, that will be fast enough for every use case.

**The Parcelweigh** promises a smooth installation, gives out a free software that works with any third-party software and offers a remote support service that will take 98% of all maintenance tasks

### **Parcelweigh options - mobile:**

Sturdy metal cart with hard rubber tires 12 volt deep cycle battery, charger, and power inverter (with more than 12 hour battery life)

Computer shuttle arm (supports PC monitor and keyboard)

Bar code scanning interface (with inclusion of handheld bar code scanning device)

### **Parcelweigh add-on options:**

Barcode reader, printer, touch screen PC

(Able to print information such barcode, weight, parcel dimensions, date/time, customer name, destination name, etc

### **Preciso 3D Parcelweigh**

#### **Things that matter in dimensional scanning**

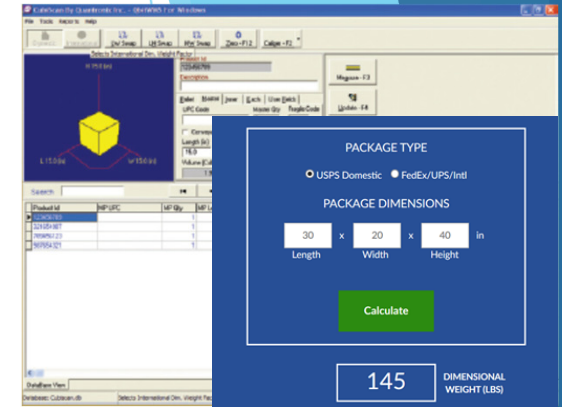
When choosing a dimensioning system there are a few things to look at.

**The first thing is the price**, since one just cannot buy a system that one cannot afford. Regarding the price one must not forget to look at the fee for the software too, since it is not always included.

**The other thing is capacity**. It is important that the dimensioning system will be well suited for measuring the parcels and items you are likely to encounter at your location. As usual, the bigger the capacity the better.

**The third thing is precision**. If you are going to measure items that will go into a small envelope or other tight-fitting parcel and at the same time clock in under a specific weight in order to save shipping cost, then precision is your friend.

**The last thing is user-friendliness**. One will get the most benefit from a system that is easy to learn and use. Such things as installation and maintenance must also be as smooth as possible.



#### **Physical Specifications:**

Length	600 mm
Width	600 mm
Height	1,3 m
Weight	32 kg

#### **Performance Specifications:**

Measurement Range	
Length	13 mm to 610 mm
Width	13 mm to 610 mm
Height	13 mm to 914 mm
Measurement Increment	2 mm / 5 mm
Weight Capacity	60 kg
Weight Increment	0.01kg

#### **Other:**

Measuring Sensor	Ultrasonic
Weight Sensor	Loadcell
Data Output	EIA RS-232-C, bi-directional
User Interface	Integrated display & keypad / QBIT™ software

Minimum PC Specifications	Windows 7/XP/95/98/NT/2000, Pentium II processor, 20 Megabytes of Disk Space, Screen Resolution Setting of 800 X 600
---------------------------	--

Power Requirements	220VAC,
Operating Temperature	40° (5° - 40° C)
Humidity	0 - 90% non-condensing
Certified as a legal-for-trade cubing and weighing device	

