

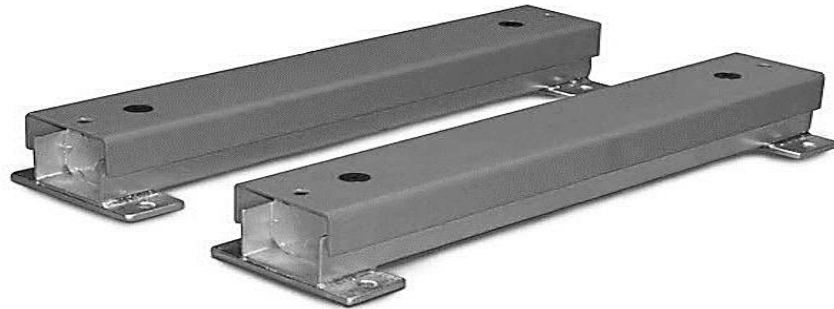


PLATINUM LIVESTOCK WEIGH-BARS

- for CATTLE weighing concepts



Model PLATINUM series weigh-bars



Indicator Specifications & Features:

- Animal Weighing function (stability)
- Accumulating
- Weight hold
- Preset Tare
- Power: 220VAC
- **Built-in rechargeable battery**
- **- up to 70hrs operation**
- RS232 output for printer or PC

QAL Livestock indicator



Weigh bar Specifications:

- Construction: Square tubing = 104mm(W)
- Industrial heavy duty 5m loadcell cables & connectors
- Fitted with 4 x 2ton loadcells
- Electro - plated (Galvanised optional)
- Height (including flat mounting plates) = 76mm
- **Feet can be raw bolted onto a LEVEL concrete floor**
- Tough construction, fully weatherproof - suitable for use in rain or sun
- Ideal to use under stock platforms, crates, crushes and wool presses
- Cables are sealed into weigh-bars to eliminate moisture, water, etc.
- Protected ends against foreign elements

Mounting dimensions for purpose of LIVESTOCK equipment:

- 60cm weigh-bar = 2 holes centre to centre = 576mm;
- 80cm weigh-bar = 2 holes centre to centre = 776mm;
- 1m weigh-bar = 2 holes centre to centre = 976mm
- 1,2m weigh-bar = 2 holes centre to centre = 1176mm
- **Width = 104mm (allow 110mm space if fitted inside a channel)**
- **Height = 76mm (NOT adjustable)**
- Max capacity: 2000kg x 0,5kg or 600kg x 0,2kg
- Platinum Weigh bars - 600 - Standard - for sheep & goat
- Platinum Weigh bars - 800 or 1m
- Standard weigh-bars for cattle and large pigs weighing